

Pedal Power

Bay View Bicycle Club (BVBC) Newsletter

www.bayviewbikeclub.org

August, 2017

Next newsletter deadline: Sept. 5,
2017

Board Members:

President

Rich Temple
president@bayviewbikeclub.org

Vice-President

Joe Fischer
vp@bayviewbikeclub.org

Secretary

Mike Dix
secretary@bayviewbikeclub.org

Treasurer

Dean Mowery
treasurer@bayviewbikeclub.org

Ride Chair

Andy Sikorski
rides@bayviewbikeclub.org

Social Committee Chair

Jill Litzenberg
social@bayviewbikeclub.org

Membership Chair

Mike Smiley
membership-
info@bayviewbikeclub.org

Newsletter Editor

MaryJo Schwabe-
newsletter@bayviewbikeclub.org

Webmaster:

Ron Santoro
bikerron@bayviewbikeclub.org

Contact us:

Bay View Bicycle Club
P.O. Box 070455
Milwaukee, WI 53207

No August member meeting

The Prez Sez

It is with a heavy heart and great sadness that I must announce that our August membership meeting has been cancelled. Apparently, most of the board members will be out of town the day of the meeting, so there won't be anyone there to do the important officiating duties. We briefly discussed a couple of other options for having the meeting before we decided to cancel it:

1. We could have let the members run the meeting, but decided against this because we are all highly trained professionals, with years and years of experience in running meetings and well... you see how that turns out every month.

2. We then discussed the possibility of hiring body doubles to take our places at the meeting and no one would be the wiser. But when I found out that Ryan Reynolds would not be available to play the part of me, I figured it wouldn't work so I nixed that idea.

Now, I know what you all are thinking ---- He can't seriously think that he looks anything like Ryan Reynolds... of course not (that would be crazy and we all know that presidents are perfectly sane).

We also realize that the August meeting was supposed to be our ice cream social, the coolest event of the riding season and probably the only reason most of you even joined the BVBC. Not to worry, we have rescheduled the ice cream social for September and Jill has taken charge of the arrangements, so you know things will be top notch.

Another quick reminder that I need to make is that we are still looking for members who would like to lend their talents to the BVBC by taking a position on the club's board of directors. Three of the current board positions expire at the end of the season. No experience is needed (seriously, none) for any of the positions, just a desire to help the club run smoothly (it does help if you can be a little bit goofy and you play well with others). If you would like to learn more about joining the board, just talk to one of the current members and they can answer questions for you. (Really, No experience is necessary)

As always, hope to see you on a ride,

Rich

Membership Meeting Minutes

July 17, 2017

This was primarily a social meeting held at the Humbolt Park Beer garden. 3 members met for a short ride prior to the meeting.

Mike Dix will be coordinating the coalition picnic at Heg Park on July 30th. There was some discussion of inviting other clubs to the picnic in the future, but it was too late to do it this year.

Labor Day weekend will offer some new rides this year. The Glacial River Trail starting in Jefferson south along the Rock River through Fort Atkinson, long route goes around Lake Koshkenong. Much of it is on a paved off road bike trail. No trail pass needed. The South Harbor road along Lake Michigan south of Kenosha is being updated to a better route. Road construction along Ryan road is affecting some of our regular routes this year.

Membership Notes

We have two new members this month. Please welcome Steve Nicol and Clyde Taylor to the club. Also, please welcome back returning member Bobbie Montgomery. We are now up to 159 members.

For those of you who use Strava to log your rides, there is now a Bay View Bike Club group available there. There are already 21 people in the group, including several non-club members. You can use this site to track your rides and compare your activities to others in the group.

A few printed membership rosters are still available. You can get one at a club meeting or at a club ride. See you out on the road.

Mike
Membership Chair

Newsletter

All club members are welcome to submit content to the Monthly Newsletter. If you come across something interesting to share, please feel free to send to MaryJo at newsletter@bayviewbikeclub.org. The deadline for the next newsletter is **September 5, 2017**.

Ride Coordinator Responsibilities

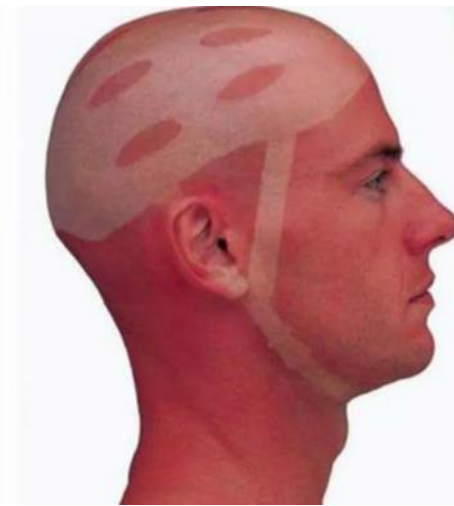
Being a ride coordinator is lots of fun and earns additional rider points. It's easy to do. There are just a few things to remember:

- ✓ Arrive a little early so that all riders have time to sign the waiver sheet.
- ✓ Provide and distribute the ride route map and cue sheet to all riders.
- ✓ Before the ride, briefly address the riders, covering (as pertinent):
 - Confirm that all riders have signed the waiver sheet
 - Acknowledge new members / guests
 - Check number of riders doing each distance
 - Route information (if known):
 - Temporary/permanent changes to the route
 - Road construction / detours
 - Rest stop opportunities
 - Have riders do a 'buddy check' to ensure that everyone is prepared for a safe ride (i.e.: wearing helmets, packs zipped up, quick releases secure, etc.)
 - Remind riders that they are obligated to follow the rules of the road.
- ✓ In case of an accident involving more serious injury or property damage, fill out the enclosed incident report when time permits. This will allow a claim to be submitted to our insurer.
- ✓ Have fun!

After the ride, return the waiver sheet (and ride package) to the Ride Chair so that everyone can qualify for rider points and to satisfy our insurance requirements. Include any items that were noted during the ride:

- ✓ Any needed additions, clarifications or corrections to the cue sheet and map.
- ✓ Concerns regarding the route.
- ✓ Any information which would improve the club experience the next time the route is ridden.

Don't Forget to Use Your Sunscreen!



Annual Kayak Outing & Dinner in July



Rider Point Totals

Oct 1, 2016 — Jul 31, 2017

Rider	Points	Rider	Points	Rider	Points
Ziegler, Suzanne	1476	Ellington, Pauline	311	Mitton, Steve	66
Mowery, Dean	1424	Gresl, Lois	286	Rosenberg, David	61
Sikorski, Andy	1305	Gibbs, Tamara	281	Butters, Gary	58
Ziegler, Joel	1256	Aschenbrenner, Gary	270	Scheeler, Elyse	57
Schmidt, Jeff	1131	Zellner, John	233	Wojciechowski, Marsha	57
Fishman, Steve	1039	Nicol, Steve	214	Stachowiak Jr, Keith	53
Siebers, Scott	892	Tallberg, Janet	211	Stachowiak Sr, Keith	53
Roessl, Linda	877	Peterson, Beth	208	Burke, Christine	49
Smiley, Michael	838	Martinez, Andy	207	Roy, Sharon	46
Dix, Michael	802	Kuhs, Kelly	206	Haas, Jill	45
Blakely, Chuck	746	Dames, William	202	Schwabe, John	45
Torres, Jeff	737	Henn, Milton	195	Jones, Liane	44
Hogan, Helen	732	Orosa, Jojo	195	Meagher, Gary	43
Tuckwood, Debra	686	Moranski, Jeffrey	192	Chappell, Dave	40
Lerand, Bill	673	Crown, Ron	188	Labinski, Dennis	40
Lerand, Carol	670	Gietzen, Catie	176	Charlson, Penny	39
Templin, Tod	669	Stoner, Joyce	176	Gannon, Dan	39
Donahue, David	648	Runnells, Mike	174	Gannon, Sandra	39
Manteau, Carl	601	Marx, James	169	Walkowiak, Cheryl	38
Stephens, Sharon	581	Peterson, Pat	162	Duffey, Diane	36
Santoro, Ron	576	Thaller, Susan	161	Matson, Kevin	33
Gast, Ted	558	McNaughton, Jamison	160	Michalets, Ellen	33
Fischer, Joe	534	Neesley, Dan	158	Mitton, Sandy	32
Soriano, Joseph	532	Velickovic, Ratko	158	Sandler, Mark	31
Wojtal, Norm	513	Hancock, Mary	155	Gonzalez, Gladys	30
Ziegler, Megan	486	Douglas, Pat	150	Hofstetter, Kim	29
McAttee, Eric	469	Wagner, Justine	150	Lalor, Tierney	29
Rutkowski, Ron	450	Wagner, Matthew	150	Lewis, Lois	29
Temple, Rich	437	Taylor, Clyde	146	Patterson, Andy	29
Wojtal, Prati	407	Ritchie, Sharon	139	Polk, Bob	29
Temple, Mark	406	Schwabe, MaryJo	125	Gould, Robert	28
Litzenberg, Jill	373	Burton, Becky	122	Barr, Amy	25
Moranski, Erica	367	Nelson, Tom	109	Constantine, Darwin	25
Lamers, Kim	360	Belvoir, Mary	108	Kelly, Kent	25
Sullivan, Tim	358	Christensen, Jean	101	Knepper, Dick	25
Blanchard, Stephen	351	Eszes, Zoltan	100	Sibinski, Elisa	25
Murray, Bob	342	Patterson, Maria	91	Tanz, Martin	25
Zur, Kimberley	337	Kliegman, Sharon	90	Truskowski, Chris	25
Borchardt, Jeff	336	Alexander, Bryan	87	Volkman, Sue	23
Binkowski, Joslyn	335	Panagiotopoulos, Harry	86	Freischmidt, Lance	15
Paque, Sam	331	Cannon, Pete	85	Mark, Scott	14
Connors, Dennis	327	Ormond, Judith	73	Bivens, Bob	10
Beachkofski, Clare	326	Umhoefer, Ron	72		
Klein, Robert	316	Hoff, Alyssa	68		

Bay View Bicycle Club

Ride Schedule for August 11, 2017 - October 1, 2017

All Rides Start at 10am April and October and 9am May through September

Tuesdays- Morning Rides (May - October) - miles vary

Start at 9:00am from Buelah Brinton Community Center, 2555 S Bay St, Bay View. Routes determined day of ride but are usually around 20 miles.

Aug 12, 2017- Charlies Memorial Ride - 23, 40 miles

Scenic ride through Hales Corners, Muskego, Big Bend and Mukwonago. Long route has numerous hills. - Passes near Charlie's gravesite. Starts at Hales Corners Park. Take I-43/894 to Forest Home Ave., south west on Forest Home (WI 24) to Janesville Rd. (WI 24), west on Janesville to 116th St. North on 116th St. Left on New Berlin Rd. to parking lot on left.

Aug 13, 2017- Oconomowoc-Eagle - 25, 42 miles

Rural ride going south from Oconomowoc, through Dousman and Eagle. Longer route has some hilly areas. - Starts at Roosevelt Park. Take I-94 west to WI 67. Take WI 67 north (becomes Summit) for 2.5 miles. Turn left on Forest St. half-mile into park. Approximate drive time: 30 minutes from Zoo

Aug 19, 2017- Whitnall Park South - 22, 37, 58 miles

Easy ride into Racine county and back - Starts at Whitnall Park Golf Course on 92nd Street just north of Rawson Ave.

Aug 20, 2017- Harrington Beach - 26, 36, 56, 66 miles

Ride along Lake Michigan north to Harrington Beach and back. Note staggered starts for this ride. - The 56 and 66 mile routes start at Virmond Park in Mequon. Take I-43 to Mequon Rd. East on Mequon Rd. to Lakeshore Dr. South approximately 3/4 mile to Virmond Park (on left). The 26 and 36 mile routes start ONE HOUR later from the Marina in Port Washington. Take I-43 north to WI 32, 32 northeast into Port Washington, right on Washington St to marina. Approximate drive time: 40 minutes from Zoo.

Aug 26, 2017- Delafield Lake Country - 20, 39, 54 miles

Scenic ride through lake country around Delafield, long route passes near Holy Hill, Pike Lake and Hartford. - Starts at Cushing Park. I-94 west to County C (Delafield), left (north) on C 0.4 miles to Main St. Left (west) on Main St. 1/2 mile to Cushing Park Rd. (by Kurts Steak House), right on Cushing Park Rd. 1/5 mile to parking lot just across bridge. Approximate drive time: 25 minutes from Zoo.

Aug 27, 2017- Cream City Century - 32, 55, 69 miles

Annual Cream City Cycle Club ride (registration fee required). - Starts at Waterford Union High School. Take Hwy 36 SW to Hwy 20, then west on Hwy 20/83 into Waterford. Turn left on S. Center St., follow signs for parking lots south and west of the high school. www.creamcitycycleclub.com (414) 299-9398

Sep 2, 2017- Glacial River - TBD miles

New for 2017! - TBD

Sep 3, 2017- TBD - TBD miles

Placeholder for new route and/or to move a prior cancellation. -

Sep 4, 2017- Lake Andrea - 26, 42 miles

New for 2017! Scenic ride from Lake Andrea Recreation Area to Carol Beach. Both routes continue through rolling hills west of Kenosha. Long route dips into Illinois for a few miles. - I-41/I-94 South to Exit 347 in Pleasant Prairie (WI Hwy 165/Lakeview Parkway - same exit as outlet mall). East on WI 165 for one mile. Recreation Area is on the left - go around to the north side of the lake and park near the baseball fields. Approximate driving time from the zoo - 50 minutes.

Sep 9, 2017- South Shore to Gorney Park - 25, 41 miles

Ride south to Gorney Park, then return. - Starts at South Shore Park in Bay View. Take I-94 exit at Becher St. Go east on Becher to E. Bay St. Veer right on E. Bay St., follow it around to Russell Ave. Turn left on Russell to Superior. Turn right on Superior to Nock St. Turn on left on Nock and go straight, park in the Marina parking lot on the left. 2300 E Nock St. Consult a map for more details.

Sep 10, 2017- Cedarburg - 26, 34, 49 miles

Very scenic ride through rural area north of Cedarburg. - Starts at Centennial Park. Take I-43 north to County C (exit 89), west on C to Wauwatosa Rd (181), right on Wauwatosa Rd to Bridge St. Right on Bridge St. to Evergreen Blvd, left on Evergreen Blvd approximately three blocks. Street parking or Pool/Waterpark lot.

Sep 16, 2017- Dundee - Northern Kettle Moraine - 20, 31, 43 miles

Very scenic ride through Northern Kettle Moraine state forest. Short route is fairly easy, longer routes are moderately hilly. - Starts from Mill Park in Dundee. Take I-41 north to the US 45 split (Cabelas). North on US 45 to WI 67 (approximately 7 miles past Kewaskum). East on 67 to Dundee. Park in lot behind the Hamburger Haus. Approximate drive time: 55 minutes from Zoo.

Sep 17, 2017- Grant Park - 16, 26 miles

Easy ride through Oak Creek Pkwy, south to Caledonia and back. - Ride starts at Grant Park Golf Course clubhouse. Take I-94 south, exit at College Ave. Go east on College Ave. to Lake Dr. Take Lake Dr. south to Hawthorne Ave., east on Hawthorne to clubhouse. Park in lot across from the clubhouse on Hawthorn Ave.

Sep 23, 2017- Fall Harvest Ride - 23, 30 miles

Ride, picnic and pick apples. Munster Orchard to Lake Geneva and back. Hilly. RSVP to Tom 414-469-2760 or basswood98@yahoo.com - From Hwy 35 & Hwy 100 in Franklin (mileage approximate). Hwy 36 to south of Burlington (22 miles); left on Hwy 83 to Hwy 50 (6 miles); right on Hwy 50 to Cty KD (1 mile); left on Cty KD to Geneva Rd (.4 miles); right on Geneva Rd to Munster Orchard (.7 miles); left onto gravel driveway. Approximately 45 minutes.

Sep 24, 2017- East Troy Trolley Dodger - 23, 35, 46 miles

Scenic ride around East Troy and Alpine Valley area. Long routes have a few large hills. - Starts at East Troy High School, 3128 Graydon Ave, East Troy, WI Take I43 south to exit 38, Hwy 20 West. Turn right (west) on Hwy 20/North St. Continue on Hwy 20 for 1.2 miles. Turn left on Beluah Ave, .4 miles, turn right on Graydon Ave, .4 miles to West St. School is on the NW corner of Graydon Ave and West St. 35 minutes from the zoo.

Sep 30, 2017- River Hills Roll - 26, 36 miles

Ride through River Hills, Mequon and Bayside. - Starts at Kletzsch Park. Take I-43 north to Good Hope Rd. Go west one mile to Milwaukee River Pkwy. South in Pkwy approximately one mile to parking lot on west side.

Oct 1, 2017- Parkside - 25, 34, 47 miles

Easy ride through Kenosha County. - Starts near Petrifying Springs Park in Kenosha. Take I-94 south, exit at County E (Kenosha), east on County E approximately 5 miles to Hwy 31, left on Hwy 31 for 0.3 miles, right on JR for 0.6 miles to parking lot on the left, just outside of Petrified Springs Park.